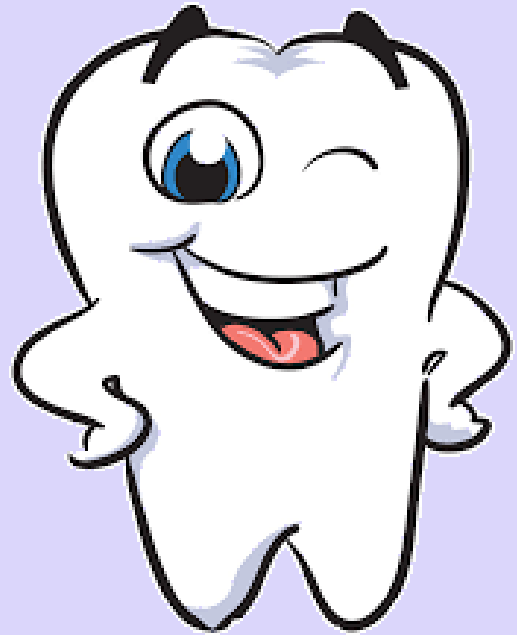


Science

EYFS



Science

EYFS

1. To name plants they would find in their natural environment.
2. To know how to keep teeth healthy - brushing twice a day, less sugary foods and drinks.
3. To name three features of every season.
4. To know ice melts.

Vocabulary

Tier 1	Tier 2	Tier 3
Flower	Spring	Melt
Tree	Autumn	Weather
Leaf	Winter	Season
Hot	Summer	
Cold		
Rain		
Sun		
Snow		

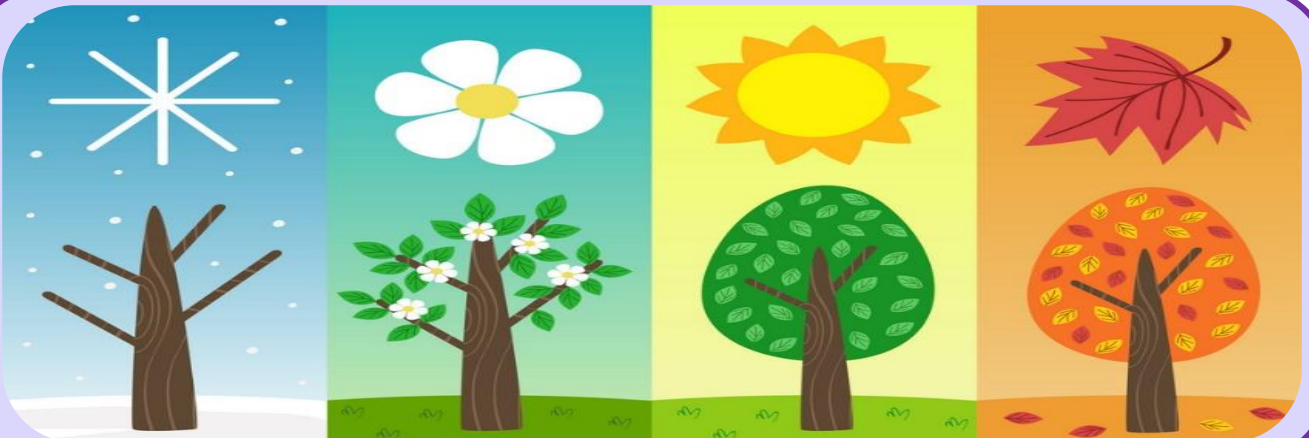
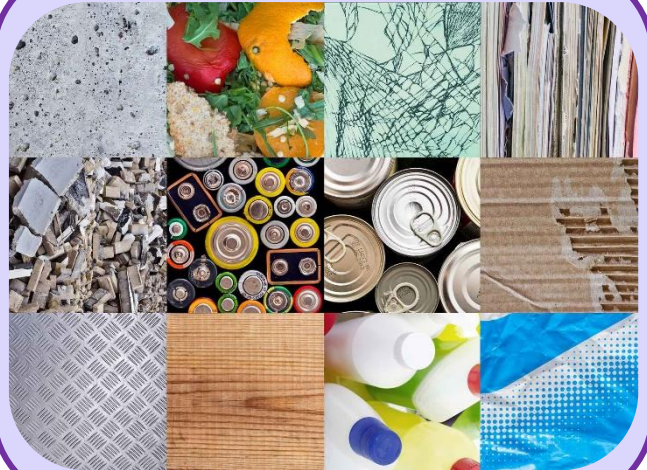
Resources

Seasons song -



Science

Year 1



Science

Year 1

1. Name and identify the stem, leaf, root and flower.
2. Know that carnivores only eat meat, herbivores do not eat meat and omnivores eat both meat and plants.
3. To know the five human senses.
4. To know that a material is what an object is made from.
5. To know the order of the four seasons.

Vocabulary

Tier 1	Tier 2	Tier 3
Amphibians	Carnivore	Absorbent
Mammals	Herbivore	Surface
Fish	Omnivore	Blossom
Birds	Properties	Bud
Reptiles	Trunk	
Senses	Stalk	
Season		
Material		
Stem		
Root		

Resources

Herbivore, carnivore, omnivore song



Materials song



The five senses song



The seasons song



Science

Year 2



Science


Year 2


1. Know that a plant needs sunlight, water, warmth, nutrients, air and space to grow.
2. Know that all animals need food, water and air to survive.
3. Know that all food chains have a producer and consumers.
4. Know that a property is a quality a material has.
5. Know that habitats provide food, water, air, shelter and space for animals to survive.

Vocabulary

Tier 1	Tier 2	Tier 3
Food chain Habitat Minibeast Source Shelter Bulb Seed Transparent Recycle Hibernation Survive	Microhabitat Offspring Producer Consumer Evergreen Opaque	Vegetation Deciduous Nutrients Germination

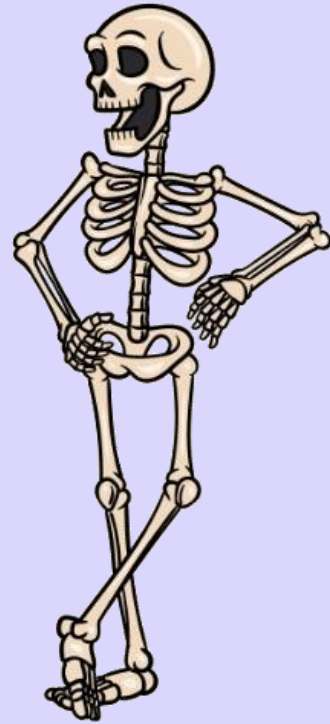
Resources

Food chain song 

Materials song 

Science

Year 3 and 4 - Cycle A



Science

Year 3 and 4 - Cycle A

1. Know the function of the roots are to anchor the plant and absorb water and nutrients, the stem supports the plant and water moves through it, the leaves produce food and flowers attract pollinators and produce seeds.
2. Know that the skeleton protects organs, allows movement and supports the body.
3. Know that light always travels in straight lines.
4. Know that a force is a push or pull that makes something move.

Vocabulary

Tier 1	Tier 2	Tier 3
Skeleton Support Muscles Force Friction Magnetic Reflect Light source Shadows Seedling Seed dispersal Pollination	Joint Tendon Attract Repel Ray Pollinator	Tissue Translucent Artificial Taproot

Resources

Parts of a plant song



Human bones song

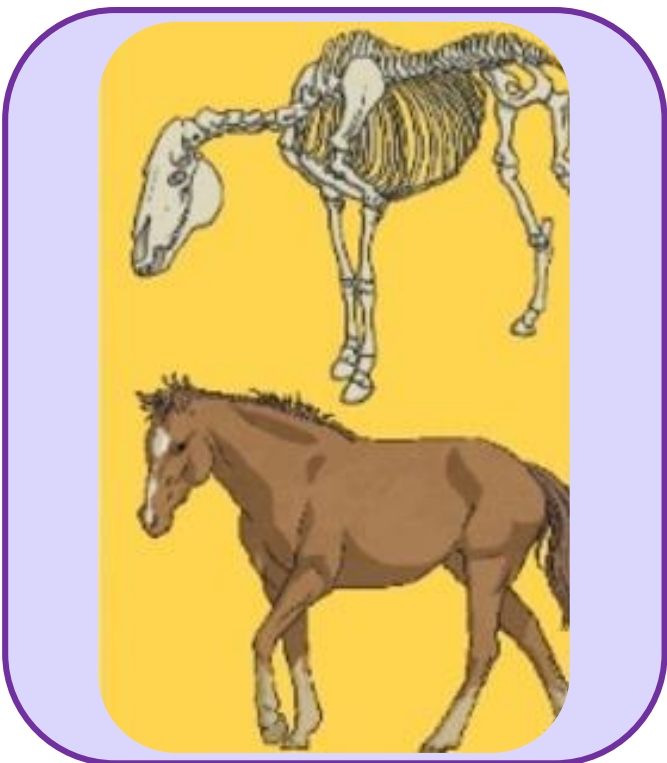
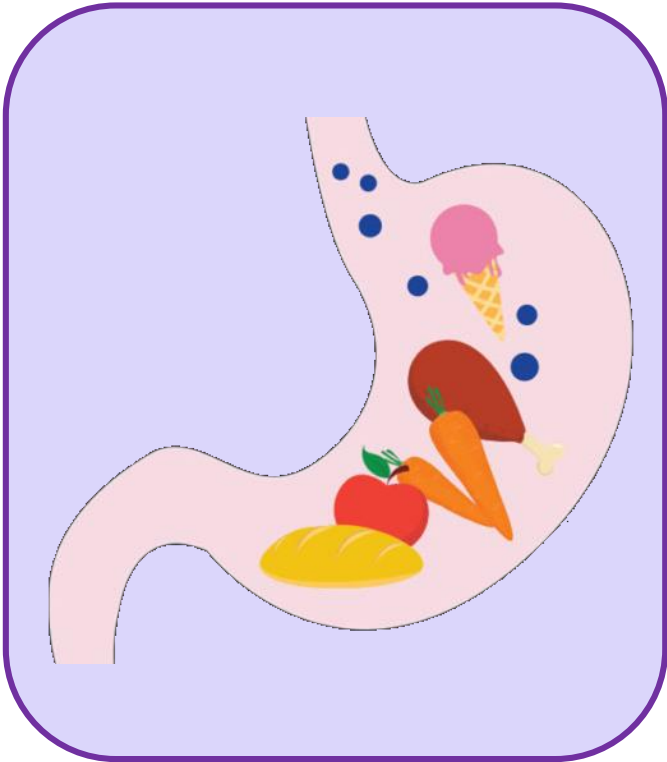


Forces song



Science

Year 3 and 4 - Cycle B



Science

Year 3 and 4 - Cycle B

1. Know that the digestive system is how food is digested and water and nutrients are absorbed by the body.
2. To know solids always take up the same amount of space, liquids take the shape of their container and gases fill the space.
3. To know vertebrates have a backbone and invertebrates do not.
4. To know that sound travels through vibrations.
5. Know that an electrical circuit must be complete to work.

Vocabulary

Tier 1	Tier 2	Tier 3
Classify	Conduct	Vascular
Vertebrate	Consumer	Non-vascular
Invertebrate	Decay	Oesophagus
Circuit	Amplitude	Vacuum
Digest	Particles	
Predator	Soundproof	
Producer		
Sound wave		
Vibration		
Pitch		
Condensation		
Evaporation		

Resources

Digestive system song



States of matter song

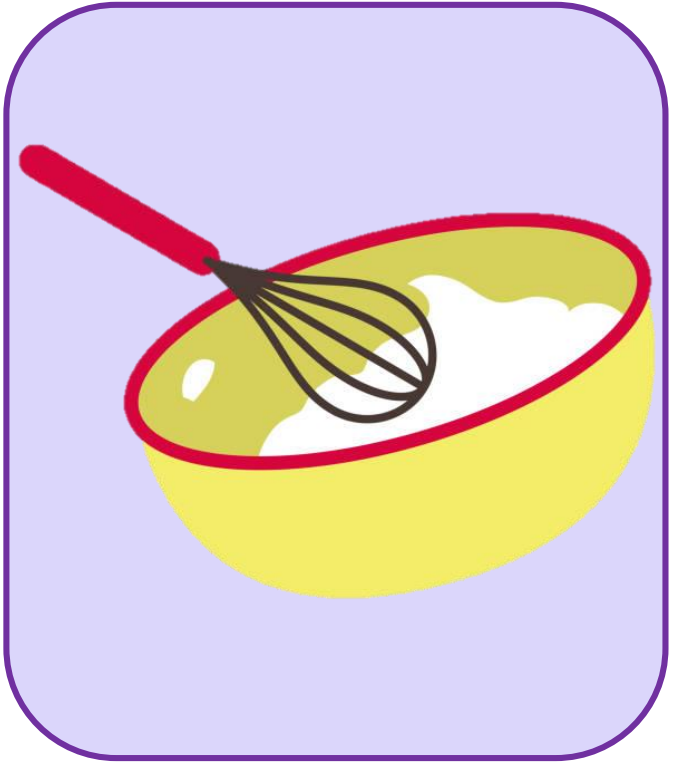
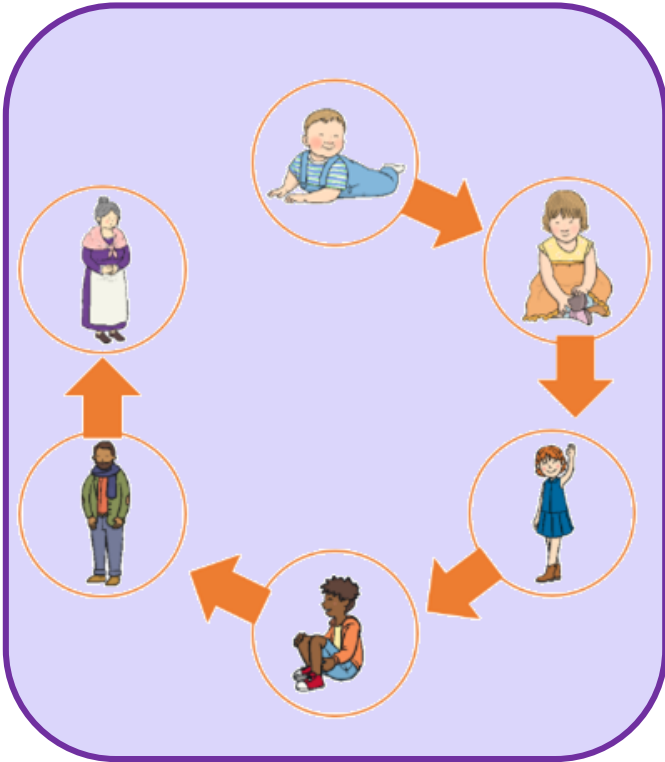


Move like a state of matter



Science

Year 5 and 6 - Cycle A



Science

Year 5 and 6 - Cycle A

1. Know that a life cycle shows the stages of development.
2. Know that a mixture is two substances that can be separated through sieving, filtering or heating.
3. Know that the planets orbit the sun and the moon orbits the Earth.
4. Know that gravity holds things to the surface of the Earth.

Vocabulary

Tier 1	Tier 2	Tier 3
Gravity Air resistance Water resistance Orbit Satellite Puberty Reproduction Gestation Mixture Substances Thermal	Axis Embryo Juvenile Solute Solution Solvent	Gravitational pull Buoyancy Celestial bodies Spherical body

Resources

Earth's orbit song

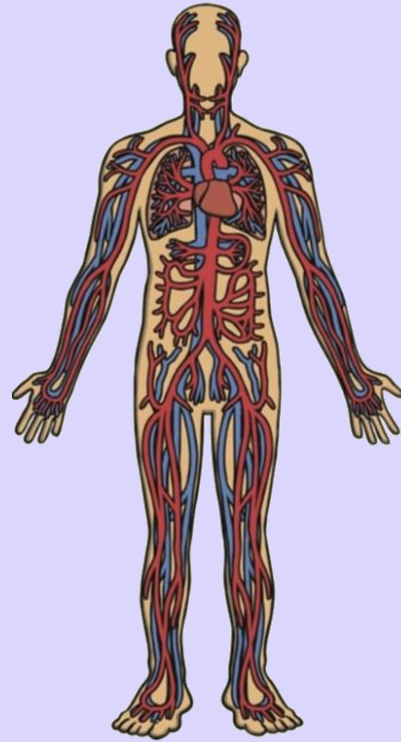


Gravity song



Science

Year 5 and 6 - Cycle B



Science

Year 5 and 6 - Cycle B

1. Know that animals which have adapted are more likely to survive.
2. Know the parts of the circulatory system: heart, lungs, veins and arteries.
3. Know that visible light is made up of the spectrum of colours of the rainbow.
4. Know the difference between renewable and non-renewable energy.

Vocabulary

Tier 1	Tier 2	Tier 3
Circulatory Veins Arteries Component Renewable Non-renewable Refract Reflect Extinction Inheritance Evolution Adaptation	Blood vessels Chambers Oxygenated Deoxygenated Spectrum Hazzard	Aorta Voltage Current Electromagnet

Resources

Horrible Histories - Charles Darwin (Natural Selection)

Renewable and non-renewable energy



